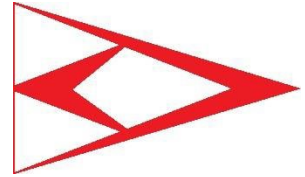




**2024 Own the River and  
Flying Scot Blackhole Creek Regatta  
Notice of Race (NoR) and  
SAILING INSTRUCTIONS (SIs)**



**September 21, 2024**

---

*The Organizing Authority is the Potapskut Sailing Association and the  
Chesapeake Bay Alberg 30 One Design Association*

---

The **Own the River Regatta** will be held on Saturday, September 21, with PSA club members using their own boats. The PHRF time on-time handicap system will be used to score each boat. This will be a non-spinnaker event.

The **Flying Scot Blackhole Creek Regatta** will be held on Saturday, September 21. Racers will use personally owned and PSA-owned Flying Scots. The skipper of each boat shall be a PSA member.

Both **Own the River Regatta** and the **Blackhole Creek Regatta** will be held in conjunction with the **Alberg 30 Bruce Rankin Memorial Regatta**.

## **Rules**

All racing shall be governed by *Racing Rules of Sailing* (RRS), the prescriptions of the United States Sailing Association, and the rules of the PHRF of the Chesapeake and Flying Scot One Design Class Association, Inc. except as altered by these Sailing Instructions.

## **Communication**

The official Notice Board is located on the porch of the PSA Clubhouse. The Race Committee (RC) shall use **VHF Channel 74** prior to and during all races. The RC may call boats over early (OCS) at the start, in addition to calling out courses and course changes, and other appropriate communications, at the discretion of the race committee. Skippers may call the committee to report withdrawals, protests, and emergencies.

## **Changes to the Sailing Instructions**

Changes to the NoR and SIs will be posted no later than 0830 on the day they take effect.

## **Schedule**

The Race Committee shall attempt as many races as practical with a goal of 3 or more races. One race shall constitute a series.

## Racing Area

The racing area shall be on the Magothy River using the marks as shown and described in Attachments B & C (there is no Attachment A). The area can be viewed on NOAA Chart 12282.

## Penalty System

For any RRS Part 2 infraction, RRS 44.1 through 44.4 shall apply except as modified below.

- RRS 44.1 shall be modified to allow a one penalty turn for infractions when there is no contact between boats.
- RRS 44.1 shall be modified to allow a two penalty turn for infractions when there is contact between boats, but no damage or injury.
- **Any boat causing serious damage to another shall retire.**

## Hearing Requests

Competitors shall verbally notify RC immediately upon finishing of any protests and must be acknowledged by RC. This changes rule 61.1(a). Completed hearing request forms are due to the RC Chairperson 2 hours after the Signal Boat has docked at PSA. RC will announce on the VHF the docking time of the signal boat as well as post docking time on the Notice board.

## Scoring

Boats that started, but did not finish, will be scored points for that race equal to one plus the number of boats that finished that race.

Boats that did not start and finish will be scored points equal to the number of starters plus two for that race. This modifies RRS Appendix A4.2.

## Safety

Boats shall not exercise right of way, cross in close proximity to, or interfere with the reasonable transit of the race area by a freighter, tug, or any other commercial vessel. Boats must take corrective action well in advance of any potentially dangerous situation. The race committee or protest committee may protest a boat for breaking this instruction based on information received from any source. The protest time limit does not apply. This changes RRS 60.2, 60.3, and 61.3.

A boat that retires from a race or leaves the racing area prior to the end of the racing shall notify the RC as soon as practicable on VHF 74. If it is not practicable to notify the RC on the water, notification shall be on shore as soon as possible at the PRO number below.

## Risk

RRS 3 states: 'The responsibility for a boat's decision to participate in a race or to continue to race is hers alone.' By participating in this event each competitor agrees and acknowledges that sailing is a potentially dangerous activity with inherent risks. These risks include strong winds and rough seas, sudden changes in

weather, failure of equipment, boat handling errors, poor seamanship by other boats, loss of balance on an unstable platform and fatigue resulting in increased risk of injury. ***Inherent in the sport of sailing is the risk of permanent, catastrophic injury or death by drowning, trauma, hypothermia or other causes.***

## **Prizes**

Prizes will be awarded to the first place boat in each event.

## **Signals Made Ashore**

Signals made ashore will be displayed from the Flagpole on the PSA Lawn and hailed to competitors on VHF channel 74. When flag AP is displayed ashore, "1 minute" is replaced with "not less than 60 minutes" in RRS Race Signals.

## **Rendezvous**

1000 hrs in the vicinity of Magothy River mark "A" of the racing area. Competitors are responsible to be on station for the rendezvous. First signal at approximately 1010.

## **Class Flags**

The PHRF flag shall be Numeral pennant "9".

The Flying Scot flag shall be Numeral pennant "4".

## **Courses**

All courses will be approximately windward/leeward but can be adjusted at the discretion of the PRO. The course may be shortened after the start and will be indicated by the signal boat flying an International Code of Signals (ICS) flag 'S', two sound signals, and the letter designating the finishing mark.

Courses shall be designated by letters displayed on the signal boat, the letters designating the location of the mark as indicated on Attachment B.

All marks are rounding marks. Marks shall be rounded in the order displayed, from left to right or from top to bottom. Marks designated by RED letters or background shall be rounded left to PORT. Marks designated by GREEN letters or background shall be rounded left to STARBOARD. All channel markers shall be passed on the channel side. One circuit shall be sailed unless the course description is followed by a numeral (e.g., "2" or "3") that designates the number of laps.

The signal boat shall always post the finishing mark of the course, regardless of the number of laps posted.

**If the RC makes a change to the course after posting it, the RC shall display an ICS flag 'L' (come within hail) or 'AP' (postponement) at least five minutes before the next starting sequence.**

## **Marks**

The marks of the course are yellow cylindrical spar buoys per the diagram and table in Attachment B.

## **Check-In**

Each boat shall sail by the RC signal boat and hail her sail number before a boat starts the first race in which she competes each day.

## **Use of Spinnakers**

For the Flying Scot Class the RC at its sole discretion may disallow the use of spinnakers by displaying a life jacket from the stern of the Race Committee boat prior to the Preparatory signal for the applicable race.

## **The Start**

The start shall be between the orange flag on the signal boat and the adjacent mark of the course. All races will be started in accordance with RRS 26.

## **The Finish**

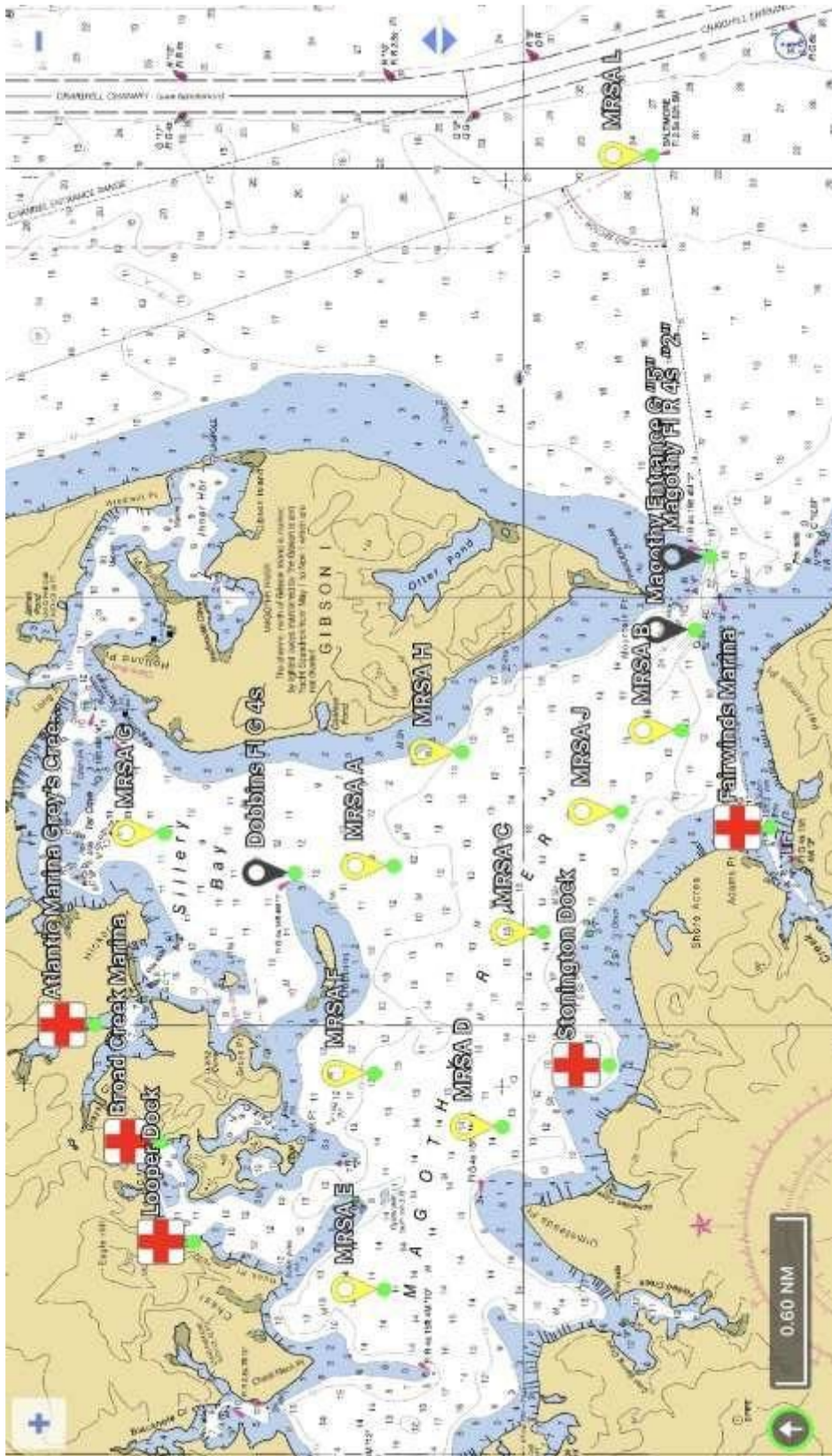
The finish line shall be between the orange flag on the RC signal boat and the adjacent mark of the course.

## **Additional Races**

ICS flag 'R' will be displayed from the RC signal boat to signal that additional races will be sailed that day

**Principal Race Officer (PRO):** RJ Bay, 301-906-9407, [bayraymond.j@gmail.com](mailto:bayraymond.j@gmail.com)

Attachment "B" – Magothy River Chart Rev. 3



Attachment B – Race Mark Locations and Bearing / Ranges between Race Marks

**Race Mark Tables**

(Position updates will be posted at [www.magothysailing.com](http://www.magothysailing.com) revised 17 June 2019)

**Table of Race Mark Positions**

Mark	Latitude	Longitude
A	39-04.466	76-27.253
B	39-03.450	76-26.620
C	39-03.930	76-27.560
D	39-04.070	76-28.470
E	39-04.480	76-29.230
F	39-04.513	76-28.221
G	39-05.240	76-27.100
H	39-04.210	76-26.720
J	39-03.660	76-27.000
"L" = Baltimore Light	39-03.553	76-23.935

**Table of Magnetic Bearings Between Race Marks**

	A	B	C	D	E	F	G	H	J	L
A		166	215	259	282	285	20	133	178	
B	346		315	305	308	322	360	6	317	94*
C	35	135		293	304	330	27	78	133	
D	79	125	113		316	35	54	96	121	
E	102	128	124	136		99	77	109	127	
F	105	142	150	215	279		62	116	143	
G	200	180	207	234	257	242		176	189	
H	313	186	258	276	289	296	356		213	
J	358	137	313	301	307	323	9	33		
L*		274*								

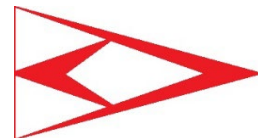
\*Bearings to or from MRSA Mark "L" - Baltimore Light are from the outer Magothy Channel Mark FI R 4s "2"

**Table of Distances Between Race Marks**

	A	B	C	D	E	F	G	H	J	L
A		1.13	0.59	1.03	1.54	0.76	0.77	0.49	0.83	
B	1.13		0.89	1.57	2.28	1.64	1.83	0.77	0.37	2.13
C	0.59	0.89		0.71	1.41	0.77	1.35	0.72	0.51	
D	1.03	1.57	0.71		0.73	0.49	1.58	1.37	1.21	
E	1.54	2.28	1.41	0.73		0.79	1.82	1.97	1.92	
F	0.76	1.64	0.77	0.49	0.79		1.40	1.13	1.27	
G	0.77	1.83	1.35	1.58	1.82	1.40		1.06	1.57	
H	0.49	0.77	0.72	1.37	1.97	1.20	1.06		0.59	
J	0.83	0.37	0.51	1.21	1.92	1.27	1.57	0.59		
L		2.13								



POTAPSKUT SAILING ASSOCIATION  
 CHESAPEAKE BAY ALBERG 30 ASSOCIATION  
 ENTRY FORM



DATE \_\_\_\_\_  
 CLASS \_\_\_\_\_

EVENT:  BRUCE RANKIN MEMORIAL TEAM RACE  
 PSA OWN THE RIVER RACE  
 FLYING SCOT BLACKHOLE CREEK REGATTA

**Boat Information**

Sail # \_\_\_\_\_ Name of Boat \_\_\_\_\_ Yacht Club \_\_\_\_\_  
 US Sailing # \_\_\_\_\_  
 CBYRA # \_\_\_\_\_

**Competitor Information**

Competitors Name \_\_\_\_\_  
 Address \_\_\_\_\_  
 Mobile Phone \_\_\_\_\_  
 Email Address \_\_\_\_\_

**Emergency Contact Information**

Contact Name \_\_\_\_\_  
 Contact # \_\_\_\_\_

**Class Information**

*I certify that this yacht conforms in every way to Class Rules and measurements. YES \_\_\_\_\_ NO \_\_\_\_\_*

**Agreement**

I agree to abide by the Racing Rules of Sailing (RRS), General and/or Special Sailing Instructions published by US Sailing, CBYRA, Potapskut Sailing Association and/or Chesapeake Bay Alberg 30 One Design Association and/or rules that govern this event. In consideration of being permitted to enter this event, being knowledgeable of the risks of competitive sailing and knowing that it is my sole responsibility to decide whether to enter or continue any race, I voluntarily assume the risk of participation in this event.

**Signature of Competitor** \_\_\_\_\_ **Date** \_\_\_\_\_